

NPD1555

15" IP65 Sunlight Readable Marine Display

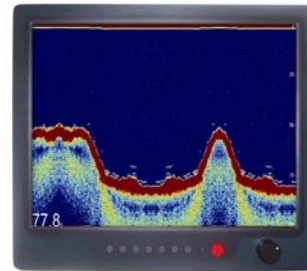
NAVPIXEL NPD1555, the high-performance, rugged touch monitor, is specially engineered to survive from the most demanding working environment. Housed in a milled billet aluminum case, the slim-profile NAVPIXEL NPD1555 is light weight and watertight. The front-mounted sunlight readable touch screen makes the industrial rugged monitor vividly and user-friendly. In addition, the high power efficiency and low heat design guarantee the stability and longevity required for mission critical deployment.

Features:

- 1000 nits Sunlight Readable LCD
- Long Life, Low Power Consumption LED Backlight
- Wide Operating Temperature
- Advanced Optical Bonding (AOT)
- High Shock & Vibration Resistance
- Resistive Touch Support
- IP65 Facial Waterproof
- 9-36V DC Input

Application:

- Marine



Specifications

V1

Model Number	NPD1555
Description	15" IP65 Sunlight Readable Marine Display
Backlight	LED Backlight
Active Display Area	304.128 x 228.096mm
Brightness	1000 cd/m ²
Resolution	1024x768(XGA)
Contrast Ratio	700:1
Pixel Pitch (mm)	0.297(H) x 0.297 (V)
Viewing Angle	160 (H), 160(V)
Display Color	16.2M
Response Time	25ms
Inputs	VGAx1, DVIx1, Compositex3, RS232x1, USBx1
PIP Support	NA
Mechanical	
IP Rating	Facial waterproof to IP65 standards when console mounted.
Construction	Rugged Aluminum Alloy Chassis
Mounting	Panel (Flush) mount, VESA mount
Dimension (mm)	352.8(W)x303.3(H)x56.4(D)
Net Weight	3.5kg
Power	
Voltage	DC Input Voltage: DC 9~36V
Power Consumption	40.8W
Environmental	
Operating Temperature	-20°C~60°C
Non-Operating Temperature	-30°C~80°C
Certification	CE / FCC
Marine Type Approval	BV Rule IACES-E10 certification, comply with IEC 60945

Specifications are subject to change without notice.

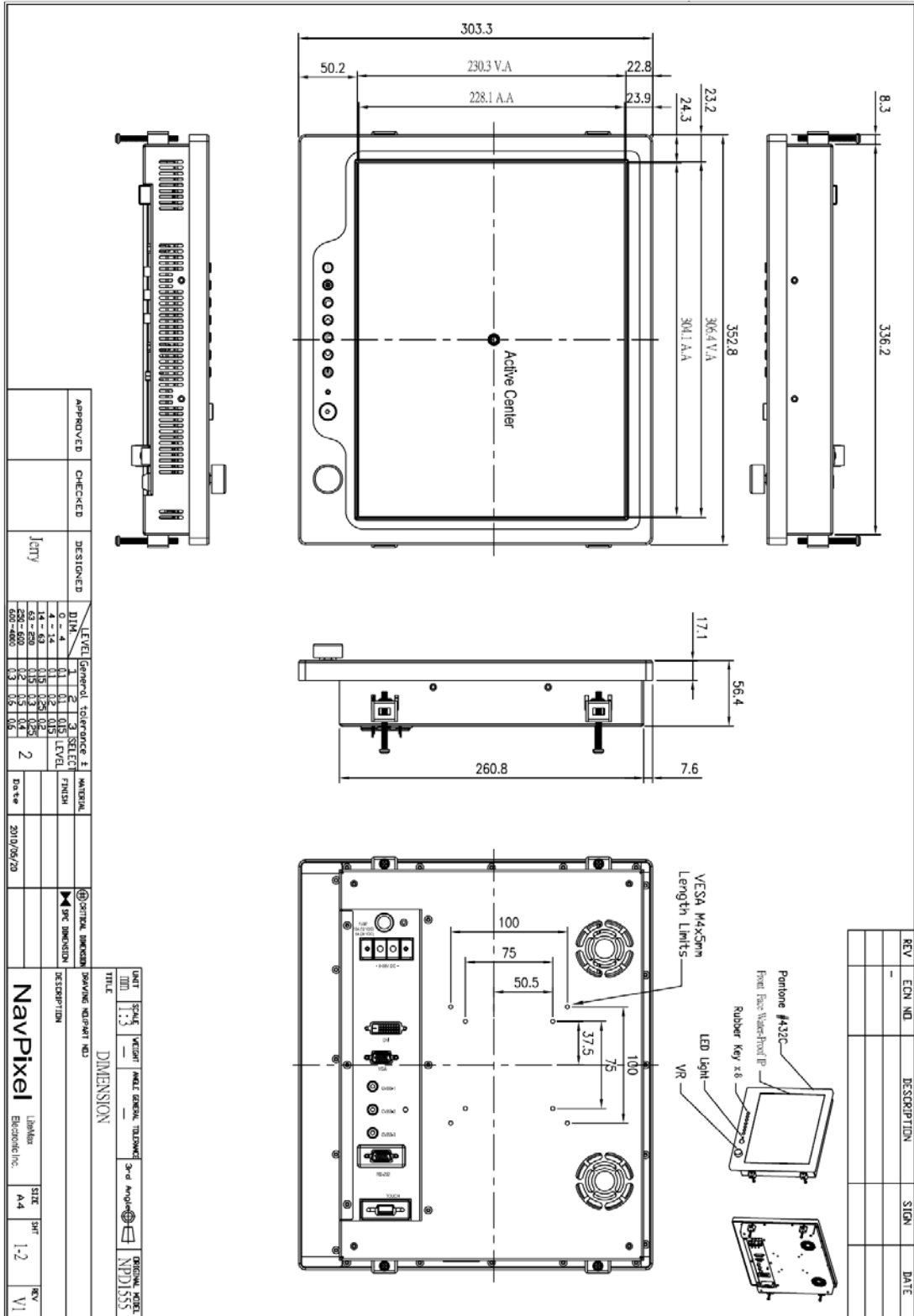
All brands or product names are trademarks or registered trademarks of their respective companies.



Mechanical Drawing

Outline Dimensions

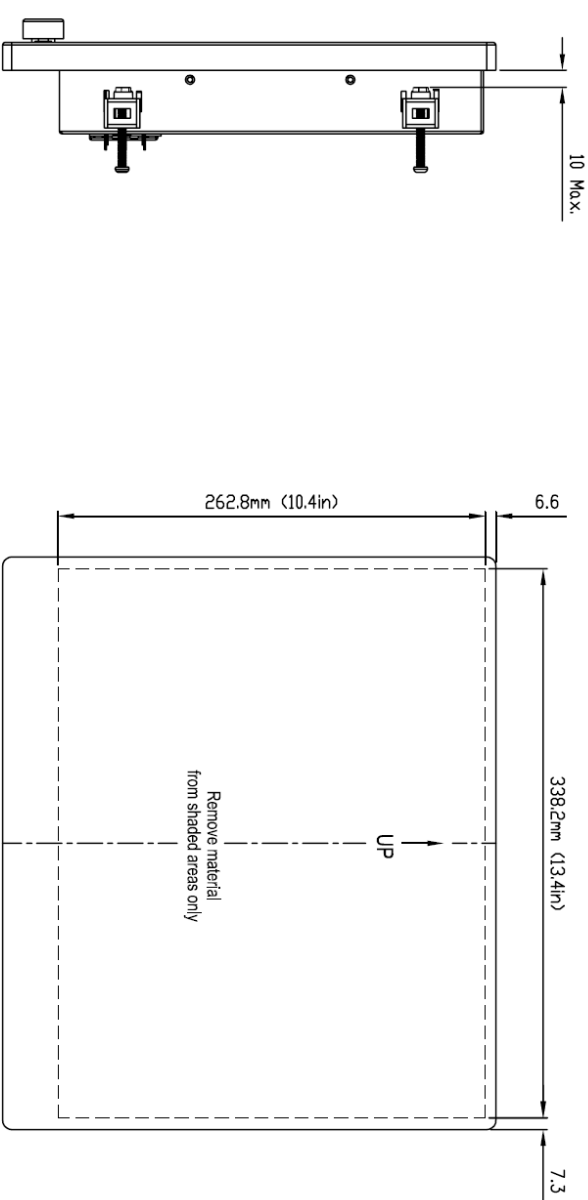
Unit:mm





REV	ECN NO.	DESCRIPTION	SIGN	DATE
-				

NPD1555 Flush Mount Template



Side View

Back View

APPROVED	CHECKED	DESIGNED	LEVEL	General Tolerance ±	SELECT LEVEL	MATERIAL FINISH	DATE
		Jetty	0 - 4	1 0.1 0.2 0.5	2 0.1 0.2 0.5		2010/05/20
			4 - 14	0.1 0.2 0.5	0.1 0.2 0.5		
			14 - 63	0.15 0.25 0.5	0.15 0.25 0.5		
			63 - 250	0.2 0.3 0.5	0.2 0.3 0.5		
			250 - 400	0.3 0.5 0.8	0.3 0.5 0.8		

UNIT	SCALE	VELOCITY	ANGLE GENERAL	TOLERANCE	3rd Angle	ORIGINAL MODEL
MM	1:3					NPD1555

Cutout Dimension

TITLE	BRAVING NO.(PART NO.)	DESCRIPTION	SIZE	SHR	REV
NavPixel		LihtMax Electronic Inc.	A4	2-2	V1



Ordering Information

Part Number	Description
NPD1555-EGAW-G01	15",1000nits.XGA,AR glass.LID15B01,AD2662,WP,AOT,V01
NPD1555-EGAW-G011	15",1000nits,XGA,AR glass.LID15B01,AD2662,WP,AOT.with adaptor,V01
NPD1555-ETAW-G01	15",1000nits,XGA,Touch-usb.(Transparency:80%),LID15B01.AD2662,WP,AOT,V01
NPD1555-ETAW-G011	15",1000nits,XGA,Touch-usb.(Transparency:80%),LID15B01.AD2662,WP,AOT,with adaptor.V01

Optional Accessories

Part Number	Description
980000300010	SET,OTHER,CD for User. Menu & Touch driver(NPD series)
810650005110	CABLE,POWER,DC,5000mm,TER.MINAL TO OPEN,14AWG*2C+BRA.ID,COOL GRAY 7C PVC JACKET,P
810130001000	CABLE.VGA.3000mm.D-SUB15P MALE.BLUE TO D-SUB 15P MALE BLUE.BLACK.P
321189155501	Print,Menu,User,NPD.1555,V0,series,P
321179155501	Print,Meun,Install,NPD,1555,V0.Flush mount template,P
112615315401 x (4)	Metal,SPCC,NPS,1531,Lock,V0,P
214032121101 x (4)	Screw,M4,32mm,Round,Ni,P
460100002101 x (4)	Fixture,other,MP-4,V0,P
980000560010 (Optional)	SET,OTHER,ADAPTER REWORK.60W KPA-060F WITH Y TYPE.TERMINAL,P
810618301010 (Optional)	CABLE.POWER.AC.1830mm USA type
810618301090 (Optional)	CABLE,POWER,AC,1830mm Europe type
810618301050 (Optional)	CABLE.POWER.AC.1830mm UK type
810618301170 (Optional)	CABLE.POWER,AC,1830mm Australia type
810618301030 (Optional)	CABLE.POWER.AC.1830mm Japan type